



1 2 3 4 5 6 7 8 9 10 11 12

United States Patent
Character Sheet

Patent No. U.S. 7,718,561 B2
Date of Patent May 16, 2010

1. SIMILARITY-BASED RECOMMENDATION SYSTEMS AND METHODS
SYSTEMS AND METHODS FOR RECOMMENDING ITEMS

CLASSIFICATION

Abstract: Systems and methods for recommending items based on similarity-based recommendations. A user provides input to a system that identifies a set of items that are similar to the user's input.

2. A method for recommending items, comprising:
receiving a user input; and
recommending items based on the user input.

3. The method of claim 2, wherein recommending items based on the user input includes:

identifying a set of items that are similar to the user input; and
recommending items from the set of items that are similar to the user input.

4. The method of claim 2, wherein recommending items based on the user input includes:

identifying a set of items that are similar to the user input; and
recommending items from the set of items that are similar to the user input.

5. A system for recommending items, comprising:
a processor; and
a memory storing instructions that, when executed by the processor, cause the processor to perform the method of claim 2.

6. The system of claim 5, wherein the instructions cause the processor to perform the method of claim 2.

7. Apparatus for recommending items

8. The apparatus of claim 7, wherein the processor is configured to perform the method of claim 2.

9. The apparatus of claim 7, wherein the memory stores instructions that, when executed by the processor, cause the processor to perform the method of claim 2.

10. The apparatus of claim 7, wherein the processor is configured to perform the method of claim 2.

11. The apparatus of claim 7, wherein the memory stores instructions that, when executed by the processor, cause the processor to perform the method of claim 2.

12. A method for recommending items, comprising:
receiving a user input; and
recommending items based on the user input.

13. The method of claim 12, wherein recommending items based on the user input includes:

14. The method of claim 12, wherein recommending items based on the user input includes:

15. The method of claim 12, wherein recommending items based on the user input includes:

16. The method of claim 12, wherein recommending items based on the user input includes:

17. The method of claim 12, wherein recommending items based on the user input includes:

18. The method of claim 12, wherein recommending items based on the user input includes:

19. The method of claim 12, wherein recommending items based on the user input includes:

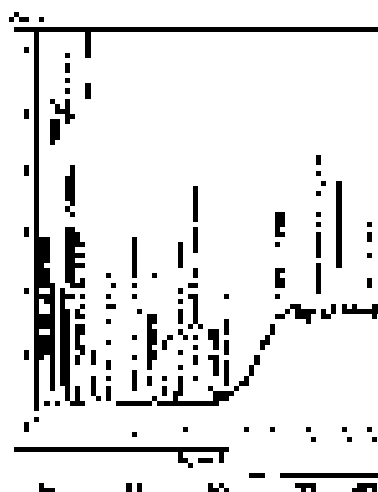
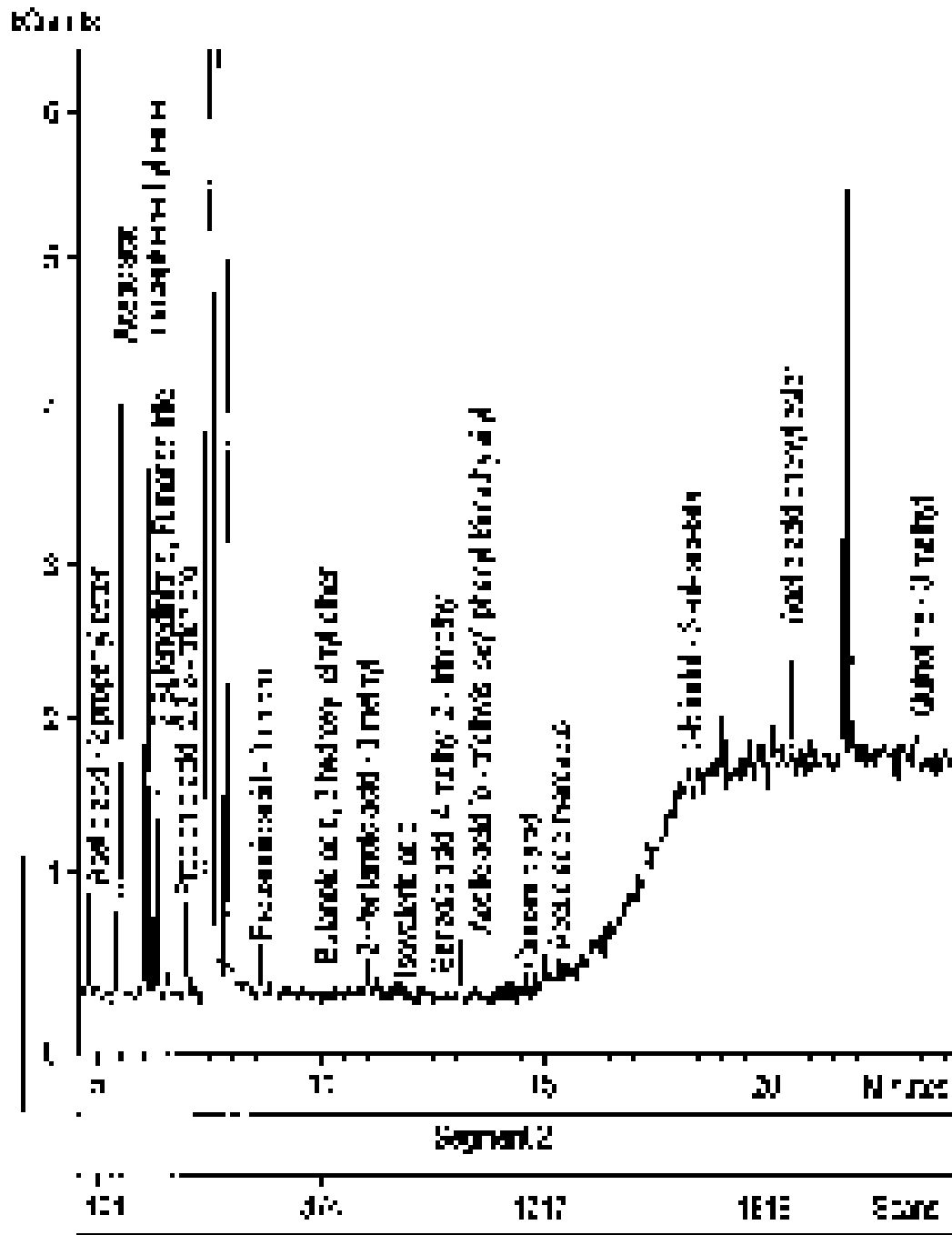


FIGURE 1



COMMUNICATIONS SECURITY ACT
 AND REGULATIONS THEREUNDER
 REGULATIONS CONCERNING THE
 PROTECTION OF THE
 SECRET

SECTION 10. PROTECTION OF THE SECRET

1. The purpose of this section is to require that all communications security information be kept secret and that all persons having access to such information be sworn to secrecy. It is the policy of the United States Government to protect the secret of communications security information from unauthorized disclosure. It is the policy of the United States Government to require that all persons having access to such information be sworn to secrecy. It is the policy of the United States Government to require that all persons having access to such information be sworn to secrecy.

SECTION 11. DEFINITIONS

1. In these regulations, unless the context otherwise requires, the following definitions shall apply: (a) "Communications security information" means information the disclosure of which would be injurious to the national defense, and which is of a nature that its disclosure would be injurious to the national defense. (b) "Person" means any individual, partnership, firm, corporation, association, or organization, whether or not organized under the laws of the United States or any State, Territory, or Possession, or any foreign country.

2. In these regulations, unless the context otherwise requires, the following definitions shall apply: (a) "Secret" means information the disclosure of which would be injurious to the national defense, and which is of a nature that its disclosure would be injurious to the national defense. (b) "Person" means any individual, partnership, firm, corporation, association, or organization, whether or not organized under the laws of the United States or any State, Territory, or Possession, or any foreign country.

TABLE

Section	Description		Classification
	Section	Section	
1	10.1	10.2	SECRET
2	10.3	10.4	SECRET
3	10.5	10.6	SECRET
4	10.7	10.8	SECRET
5	10.9	10.10	SECRET
6	10.11	10.12	SECRET
7	10.13	10.14	SECRET
8	10.15	10.16	SECRET
9	10.17	10.18	SECRET
10	10.19	10.20	SECRET

SECTION 12

Section	Description		Classification
	Section	Section	
1	12.1	12.2	SECRET
2	12.3	12.4	SECRET
3	12.5	12.6	SECRET
4	12.7	12.8	SECRET
5	12.9	12.10	SECRET
6	12.11	12.12	SECRET

1. The purpose of this section is to require that all communications security information be kept secret and that all persons having access to such information be sworn to secrecy. It is the policy of the United States Government to protect the secret of communications security information from unauthorized disclosure. It is the policy of the United States Government to require that all persons having access to such information be sworn to secrecy. It is the policy of the United States Government to require that all persons having access to such information be sworn to secrecy.

SECTION 13. DEFINITIONS

1. In these regulations, unless the context otherwise requires, the following definitions shall apply: (a) "Communications security information" means information the disclosure of which would be injurious to the national defense, and which is of a nature that its disclosure would be injurious to the national defense.

2. In these regulations, unless the context otherwise requires, the following definitions shall apply: (a) "Secret" means information the disclosure of which would be injurious to the national defense, and which is of a nature that its disclosure would be injurious to the national defense.

3. In these regulations, unless the context otherwise requires, the following definitions shall apply: (a) "Person" means any individual, partnership, firm, corporation, association, or organization, whether or not organized under the laws of the United States or any State, Territory, or Possession, or any foreign country.

4. In these regulations, unless the context otherwise requires, the following definitions shall apply: (a) "Secret" means information the disclosure of which would be injurious to the national defense, and which is of a nature that its disclosure would be injurious to the national defense.

5. In these regulations, unless the context otherwise requires, the following definitions shall apply: (a) "Person" means any individual, partnership, firm, corporation, association, or organization, whether or not organized under the laws of the United States or any State, Territory, or Possession, or any foreign country.

SECTION 14. DEFINITIONS

1. In these regulations, unless the context otherwise requires, the following definitions shall apply: (a) "Communications security information" means information the disclosure of which would be injurious to the national defense, and which is of a nature that its disclosure would be injurious to the national defense.

2. In these regulations, unless the context otherwise requires, the following definitions shall apply: (a) "Secret" means information the disclosure of which would be injurious to the national defense, and which is of a nature that its disclosure would be injurious to the national defense.

SECRET

CONFIDENTIAL - SECURITY INFORMATION

CONFIDENTIAL

Category	1950	1951	1952	1953	1954	Total
Confidential	10	15	20	25	30	90
Secret	5	10	15	20	25	75
Confidential	15	25	35	45	55	175
Secret	10	20	30	40	50	150
Confidential	20	30	40	50	60	200
Secret	15	25	35	45	55	175
Confidential	25	35	45	55	65	230
Secret	20	30	40	50	60	200
Confidential	30	40	50	60	70	250
Secret	25	35	45	55	65	225
Confidential	35	45	55	65	75	280
Secret	30	40	50	60	70	250
Confidential	40	50	60	70	80	300
Secret	35	45	55	65	75	275
Confidential	45	55	65	75	85	330
Secret	40	50	60	70	80	300
Confidential	50	60	70	80	90	350
Secret	45	55	65	75	85	325
Confidential	55	65	75	85	95	375
Secret	50	60	70	80	90	350
Confidential	60	70	80	90	100	400
Secret	55	65	75	85	95	375
Confidential	65	75	85	95	105	425
Secret	60	70	80	90	100	400
Confidential	70	80	90	100	110	450
Secret	65	75	85	95	105	425
Confidential	75	85	95	105	115	475
Secret	70	80	90	100	110	450
Confidential	80	90	100	110	120	500
Secret	75	85	95	105	115	475
Confidential	85	95	105	115	125	525
Secret	80	90	100	110	120	500
Confidential	90	100	110	120	130	550
Secret	85	95	105	115	125	525
Confidential	95	105	115	125	135	575
Secret	90	100	110	120	130	550
Confidential	100	110	120	130	140	600
Secret	95	105	115	125	135	575
Confidential	105	115	125	135	145	625
Secret	100	110	120	130	140	600
Confidential	110	120	130	140	150	650
Secret	105	115	125	135	145	625
Confidential	115	125	135	145	155	675
Secret	110	120	130	140	150	650
Confidential	120	130	140	150	160	700
Secret	115	125	135	145	155	675
Confidential	125	135	145	155	165	725
Secret	120	130	140	150	160	700
Confidential	130	140	150	160	170	750
Secret	125	135	145	155	165	725
Confidential	135	145	155	165	175	775
Secret	130	140	150	160	170	750
Confidential	140	150	160	170	180	800
Secret	135	145	155	165	175	775
Confidential	145	155	165	175	185	825
Secret	140	150	160	170	180	800
Confidential	150	160	170	180	190	850
Secret	145	155	165	175	185	825
Confidential	155	165	175	185	195	875
Secret	150	160	170	180	190	850
Confidential	160	170	180	190	200	900
Secret	155	165	175	185	195	875
Confidential	165	175	185	195	205	925
Secret	160	170	180	190	200	900
Confidential	170	180	190	200	210	950
Secret	165	175	185	195	205	925
Confidential	175	185	195	205	215	975
Secret	170	180	190	200	210	950
Confidential	180	190	200	210	220	1000
Secret	175	185	195	205	215	975
Confidential	185	195	205	215	225	1025
Secret	180	190	200	210	220	1000
Confidential	190	200	210	220	230	1050
Secret	185	195	205	215	225	1025
Confidential	195	205	215	225	235	1075
Secret	190	200	210	220	230	1050
Confidential	200	210	220	230	240	1100
Secret	195	205	215	225	235	1075
Confidential	205	215	225	235	245	1125
Secret	200	210	220	230	240	1100
Confidential	210	220	230	240	250	1150
Secret	205	215	225	235	245	1125
Confidential	215	225	235	245	255	1175
Secret	210	220	230	240	250	1150
Confidential	220	230	240	250	260	1200
Secret	215	225	235	245	255	1175
Confidential	225	235	245	255	265	1225
Secret	220	230	240	250	260	1200
Confidential	230	240	250	260	270	1250
Secret	225	235	245	255	265	1225
Confidential	235	245	255	265	275	1275
Secret	230	240	250	260	270	1250
Confidential	240	250	260	270	280	1300
Secret	235	245	255	265	275	1275
Confidential	245	255	265	275	285	1325
Secret	240	250	260	270	280	1300
Confidential	250	260	270	280	290	1350
Secret	245	255	265	275	285	1325
Confidential	255	265	275	285	295	1375
Secret	250	260	270	280	290	1350
Confidential	260	270	280	290	300	1400
Secret	255	265	275	285	295	1375
Confidential	265	275	285	295	305	1425
Secret	260	270	280	290	300	1400
Confidential	270	280	290	300	310	1450
Secret	265	275	285	295	305	1425
Confidential	275	285	295	305	315	1475
Secret	270	280	290	300	310	1450
Confidential	280	290	300	310	320	1500
Secret	275	285	295	305	315	1475
Confidential	285	295	305	315	325	1525
Secret	280	290	300	310	320	1500
Confidential	290	300	310	320	330	1550
Secret	285	295	305	315	325	1525
Confidential	295	305	315	325	335	1575
Secret	290	300	310	320	330	1550
Confidential	300	310	320	330	340	1600
Secret	295	305	315	325	335	1575
Confidential	305	315	325	335	345	1625
Secret	300	310	320	330	340	1600
Confidential	310	320	330	340	350	1650
Secret	305	315	325	335	345	1625
Confidential	315	325	335	345	355	1675
Secret	310	320	330	340	350	1650
Confidential	320	330	340	350	360	1700
Secret	315	325	335	345	355	1675
Confidential	325	335	345	355	365	1725
Secret	320	330	340	350	360	1700
Confidential	330	340	350	360	370	1750
Secret	325	335	345	355	365	1725
Confidential	335	345	355	365	375	1775
Secret	330	340	350	360	370	1750
Confidential	340	350	360	370	380	1800
Secret	335	345	355	365	375	1775
Confidential	345	355	365	375	385	1825
Secret	340	350	360	370	380	1800
Confidential	350	360	370	380	390	1850
Secret	345	355	365	375	385	1825
Confidential	355	365	375	385	395	1875
Secret	350	360	370	380	390	1850
Confidential	360	370	380	390	400	1900
Secret	355	365	375	385	395	1875
Confidential	365	375	385	395	405	1925
Secret	360	370	380	390	400	1900
Confidential	370	380	390	400	410	1950
Secret	365	375	385	395	405	1925
Confidential	375	385	395	405	415	1975
Secret	370	380	390	400	410	1950
Confidential	380	390	400	410	420	2000
Secret	375	385	395	405	415	1975
Confidential	385	395	405	415	425	2025
Secret	380	390	400	410	420	2000
Confidential	390	400	410	420	430	2050
Secret	385	395	405	415	425	2025
Confidential	395	405	415	425	435	2075
Secret	390	400	410	420	430	2050
Confidential	400	410	420	430	440	2100
Secret	395	405	415	425	435	2075
Confidential	405	415	425	435	445	2125
Secret	400	410	420	430	440	2100
Confidential	410	420	430	440	450	2150
Secret	405	415	425	435	445	2125
Confidential	415	425	435	445	455	2175
Secret	410	420	430	440	450	2150
Confidential	420	430	440	450	460	2200
Secret	415	425	435	445	455	2175
Confidential	425	435	445	455	465	2225
Secret	420	430	440	450	460	2200
Confidential	430	440	450	460	470	2250
Secret	425	435	445	455	465	2225
Confidential	435	445	455	465	475	2275
Secret	430	440	450	460	470	2250
Confidential	440	450	460	470	480	2300
Secret	435	445	455	465	475	2275
Confidential	445	455	465	475	485	2325
Secret	440	450	460	470	480	2300
Confidential	450	460	470	480	490	2350
Secret	445	455	4			

